

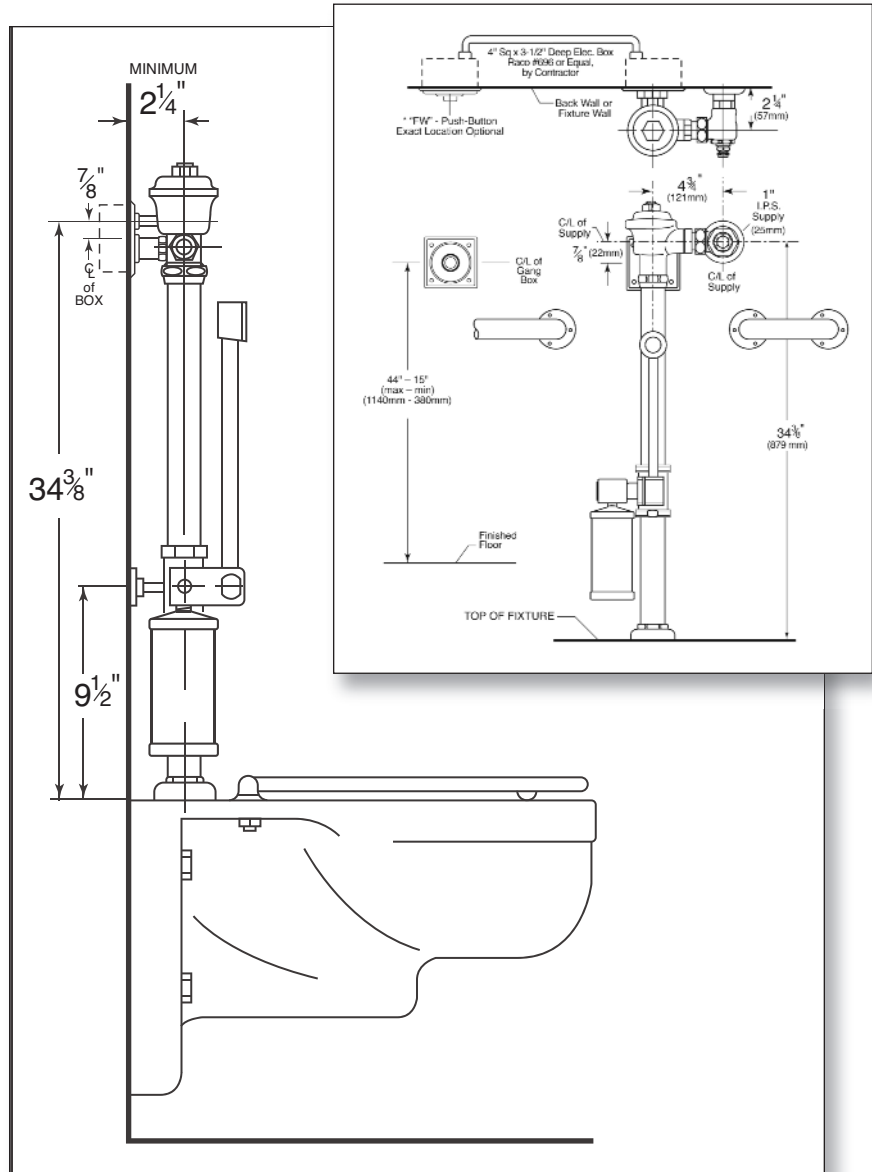
Polished chrome plated flush valve, diaphragm type, 1.6 gallons per flush, externally adjustable for water conservation, with 1" capped screwdriver angle stop with back-check, renewable main valve seat, equipped with push-button hydro-flush actuator through wall, wall plate for use with two gang gem box, wall flange, "Turn-to-Silence" equipment, with "Kwikfit" threaded union tailpiece, vacuum breaker, with 977-1 bedpan diverter valve with de-oseptic injector unit, wall support, wall flange, spud nut and spud flange for 1½" top spud. Includes 194K Sweat Adaptor Kit.

Variations

- C – 3" Oscillating disc
- E – One wall bumper (for seat with cover or closed front seat without cover)
- F – Two wall bumpers (for open front seat without cover)
- L – Handle or push-button on front of valve
- T6 – Heavy cast wall flange with allen head set screw
- T7 – Nickel-silver handle, push-button, or oscillating disc, as applicable
- T8 – Sweat inlet stop
- T36 – Solid ring wall support for flush connection
- T42 – Sweat adapter kit for stop
- T46 – Split ring wall support for flush connection

Remarks

* For use with 1.6 gallon low consumption water closet



Delany
Since 1879
Products™

P.O. Box 411 · Charlottesville · VA · 22902 · USA
Phone: (434) 296-0166 · Fax (434) 977-3596
Email: info@delanyproducts.com
Web: www.delanyproducts.com

©2009