

Polished chrome plated flush valve, diaphragm type, 1.6 gallons per flush, externally adjustable for water conservation, with 1” capped screwdriver angle stop with back-check, renewable main valve seat, equipped with push-button hydro-flush actuator through wall, wall plate for use with two gang gem box, wall flange, “Turn-to-Silence” equipment, with “Kwikfit” threaded union tailpiece, vacuum breaker, offset flush connection, with 977 bedpan diverter valve, wall support, wall flange, spud nut and spud flange for 1½” top spud. Includes 194K Sweat Adaptor Kit.

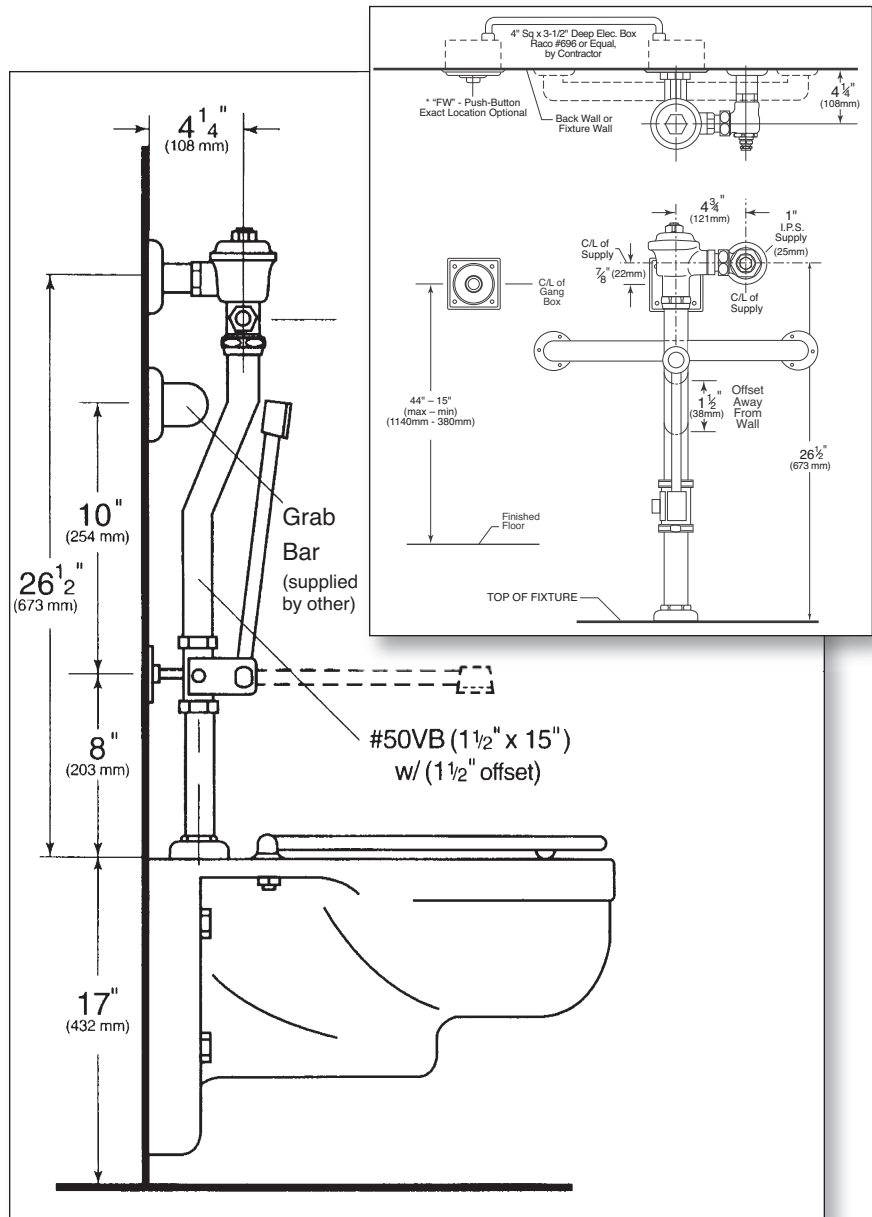
Installation complies with ADA height requirements.

Variations

- C – 3” Oscillating disc
- E – One wall bumper (for seat with cover or closed front seat without cover)
- F – Two wall bumpers (for open front seat without cover)
- L – Handle or push-button on front of valve
- T6 – Heavy cast wall flange with allen head set screw
- T7 – Nickel-silver handle, push-button, or oscillating disc, as applicable
- T8 – Sweat inlet stop
- T36 – Solid ring wall support for flush connection
- T42 – Sweat adapter kit for stop
- T46 – Split ring wall support for flush connection

Remark

* For use with 1.6 gallon low consumption water closet



Note: In some localities local code requires that the Spray Arm Head be 6” below the critical level line on the vacuum breaker.

