

**P**olished chrome plated flush valve, diaphragm type, externally adjustable for water conservation, with 1" capped screwdriver angle stop with back-check, renewable main valve seat, metal "Rubberflex" oscillating handle, "Turn-to-Silence" equipment, for use with off center Diverter Valves, with "Kwikfit" special length threaded union tailpiece, vacuum breaker, wall flange, spud nut and spud flange. Diverter Valve assembly furnished by other.



T36-Solid ring wall support for flush connection

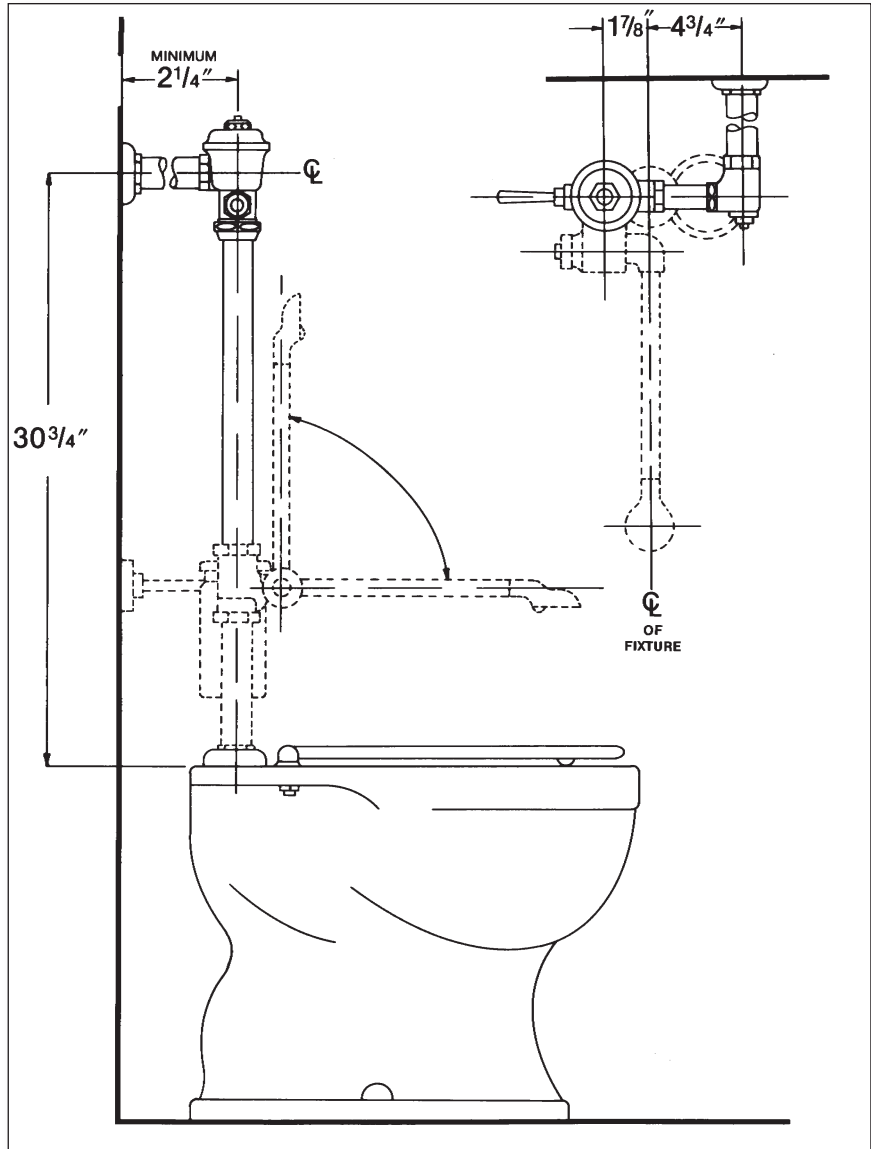


T46-Split ring wall support for flush connection

#### Variations

- C - 3" Oscillating disc
- L - Handle or push-button on front of valve
- T6 - Heavy cast wall flange with allen head set screw
- T7 - Nickel-silver handle, push-button, or oscillating disc, as applicable
- T8 - Sweat inlet stop
- T36 - Solid ring wall support for flush connection
- T42 - Sweat adapter kit for stop
- T46 - Split ring wall support for flush connection

#### Remarks



**Delany**  
FLUSH VALVES  
SINCE 1879

Coyne and Delany Co.  
P.O. Box 411 · Charlottesville · VA · 22902 · USA  
Phone: (434) 296-0166 · Fax (434) 977-3596