

Polished chrome plated flush valve, diaphragm type, externally adjustable for water conservation, with 1" capped screwdriver angle stop with back-check, renewable main valve seat, metal "Rubberflex" oscillating handle, "Turn-to-Silence" equipment, with "Kwikfit" threaded union tailpiece, vacuum breaker, wall flange, spud nut and spud flange for 1½" top spud.



T36—Solid ring wall support for flush connection

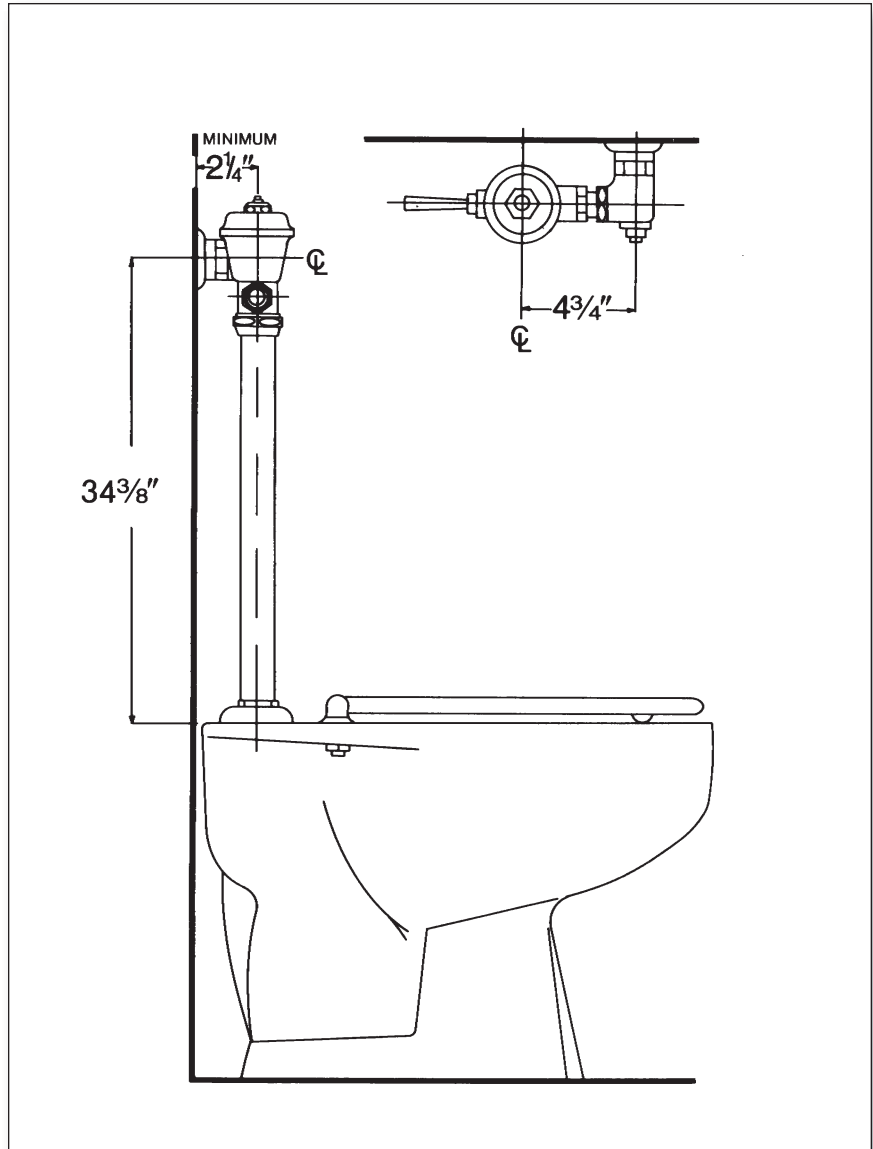


T46—Split ring wall support for flush connection

Variations

- 3 — Water saver equipment
- C — 3" Oscillating disc
- E — One wall bumper (for seat with cover or closed front seat without cover)
- F — Two wall bumpers (for open front seat without cover)
- L — Handle or push-button on front of valve
- T6 — Heavy cast wall flange with allen head set screw
- T7 — Nickel-silver handle, push-button, or oscillating disc, as applicable
- T8 — Sweat inlet stop
- T36 — Solid ring wall support for flush connection
- T42 — Sweat adapter kit for stop
- T46 — Split ring wall support for flush connection

Remarks



P.O. Box 411 · Charlottesville · VA · 22902 · USA
 Phone: (434) 296-0166 · Fax (434) 977-3596
 Email: info@delanyproducts.com
 Web: www.delanyproducts.com
 ©2009