

**“L.C.” LOW CONSUMPTION  
FLUSH VALVE (1.6 GALS. PER FLUSH)**

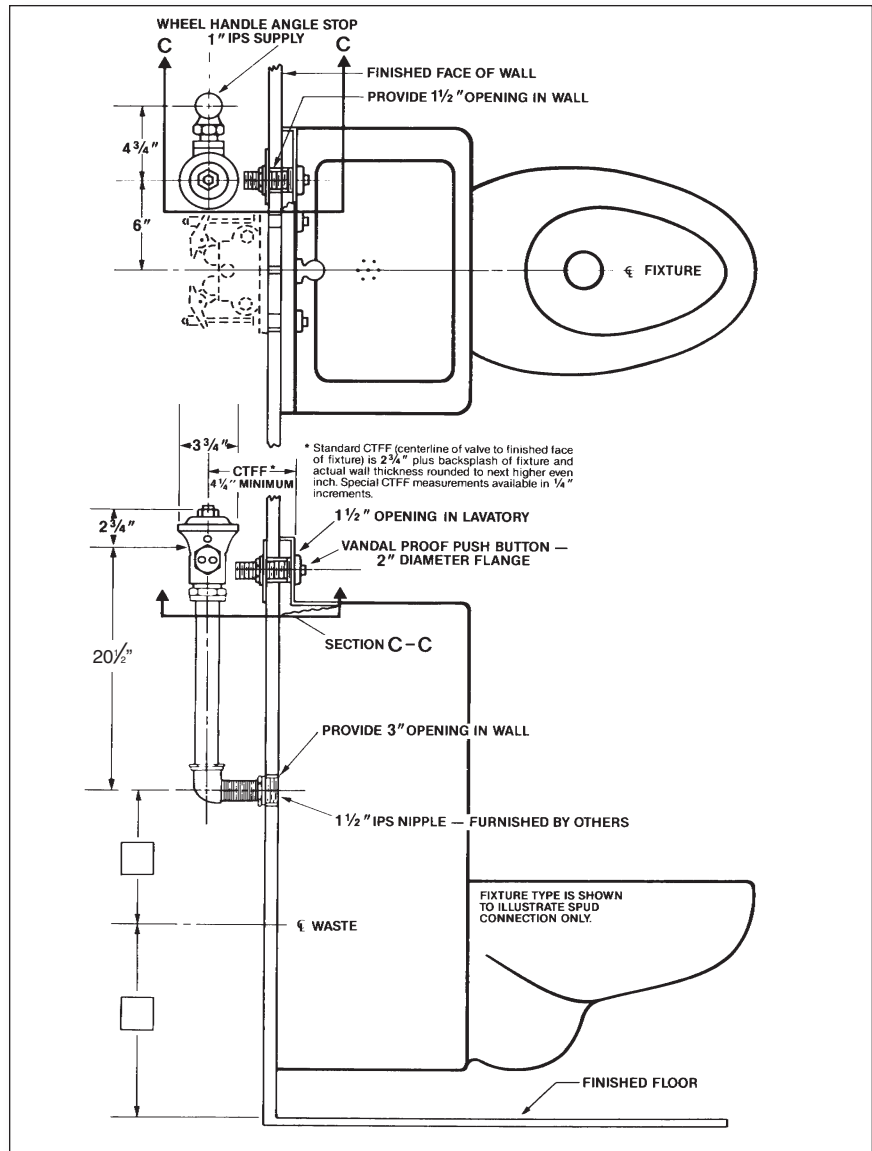
**C**oncealed rough brass flush valve, diaphragm type, 1.6 gallons per flush, externally adjustable for water conservation, with 1" wheel handle angle stop with back-check, renewable main valve seat, equipped with push-button hydro-flush actuator through wall and fixture back splash, back splash flange, "Turn-to-Silence" equipment, with "Kwikfit" threaded union tailpiece, body casting for roughing left or right vacuum breaker, elbow flush connection for 1½" concealed back spud. All exposed parts chrome plated. Includes 194 Sweat Adaptor.

#### Variations

- 3 - Water saver equipment
- A - Screwdriver operated stop
- C - 3" Oscillating disc
- M - 1¼" Female I.P. union outlet
- T7 - Nickel-silver handle, push-button, or oscillating disc, as applicable
- T8 - Sweat inlet stop
- T37 - Non-syphon bypass
- T42 - Sweat adapter kit for stop
- Y - 1" Straight stop

#### Remarks

**\* For use with 1.6 gallon low consumption water closet**



P.O. Box 411 · Charlottesville · VA · 22902 · USA  
 Phone: (434) 296-0166 · Fax (434) 977-3596  
 Email: info@delanyproducts.com  
 Web: www.delanyproducts.com  
 ©2009