

534-1.6

**“L.C.” LOW CONSUMPTION
FLUSH VALVE (1.6 GALS. PER FLUSH)**

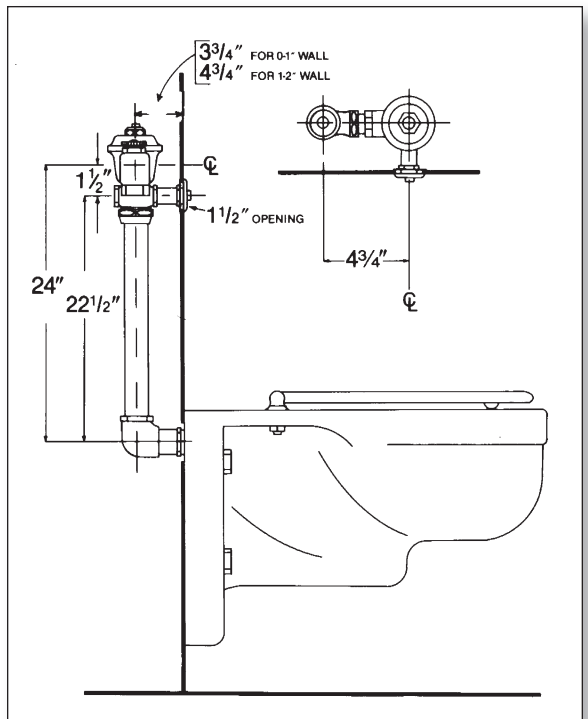
Concealed rough brass flush valve, diaphragm type, 1.6 gallons per flush, externally adjustable, with 1” wheel handle angle stop with back-check, renewable main valve seat, metal “Rubberflex” push-bottom through wall, wall flange. “Turn-to-Silence” equipment, with “Kwikfit” threaded union tailpiece, vacuum breaker, elbow flush connection for 1½” concealed back spud. All exposed parts polished chrome.

Variations

- A – Screwdriver operated stop
- C – 3” Oscillating disc
- E – One wall bumper (for seat with cover or closed front seat without cover)
- F – Two wall bumpers (for open front seat without cover)
- T-8 – Sweat inlet stop
- T9 – Vandal proofing of push-button, oscillating disc, handle, or foot pedal, as applicable (concealed valves only)
- T28 – Oscillating handle
- T42 – Sweat adapter kit for stop
- Y – 1” Straight stop

Remarks

* For use with 1.6 gallon low consumption water closet



P.O. Box 411 · Charlottesville · VA · 22902 · USA
Phone: (434) 296-0166 · Fax (434) 977-3596
Email: info@delanyproducts.com
Web: www.delanyproducts.com
©2009