

1372-1.5

WATER SAVER URINAL FLUSH VALVE (1.5 GALS. PER FLUSH)

Sensor operated concealed rough brass flush valve, diaphragm type, 1.5 gallons per flush, externally adjustable for water conservation, equipped with solenoid and sensor unit, with wall cover plate for electrical gang box with tamper-proof screws, with 1" wheel handle angle stop with back-check, renewable main valve seat, "Turn-to-Silence" equipment, with "Kwikfit" threaded union tailpiece, vacuum breaker, elbow flush connection for 1 1/4" concealed back spud. All exposed parts brushed stainless steel. *UL Listed.*

Variations

- A - Screwdriver operated stop
- M - 1/4" Female I.P. union outlet
- T8 - Sweat inlet stop
- T42 - Sweat adapter kit for stop
- T45 - 1" Female I.P. union outlet
- Y - 1" Straight stop

Electrical Variations

___ For: -24 Volts (requires transformer)

Sensor: -Input 24VAC
-Output 24 VAC

Solenoid: -24VAC 50/60 Hz

Transformer: -120VAC 50/60 Hz Primary
-24VAC 50/60 Hz Secondary

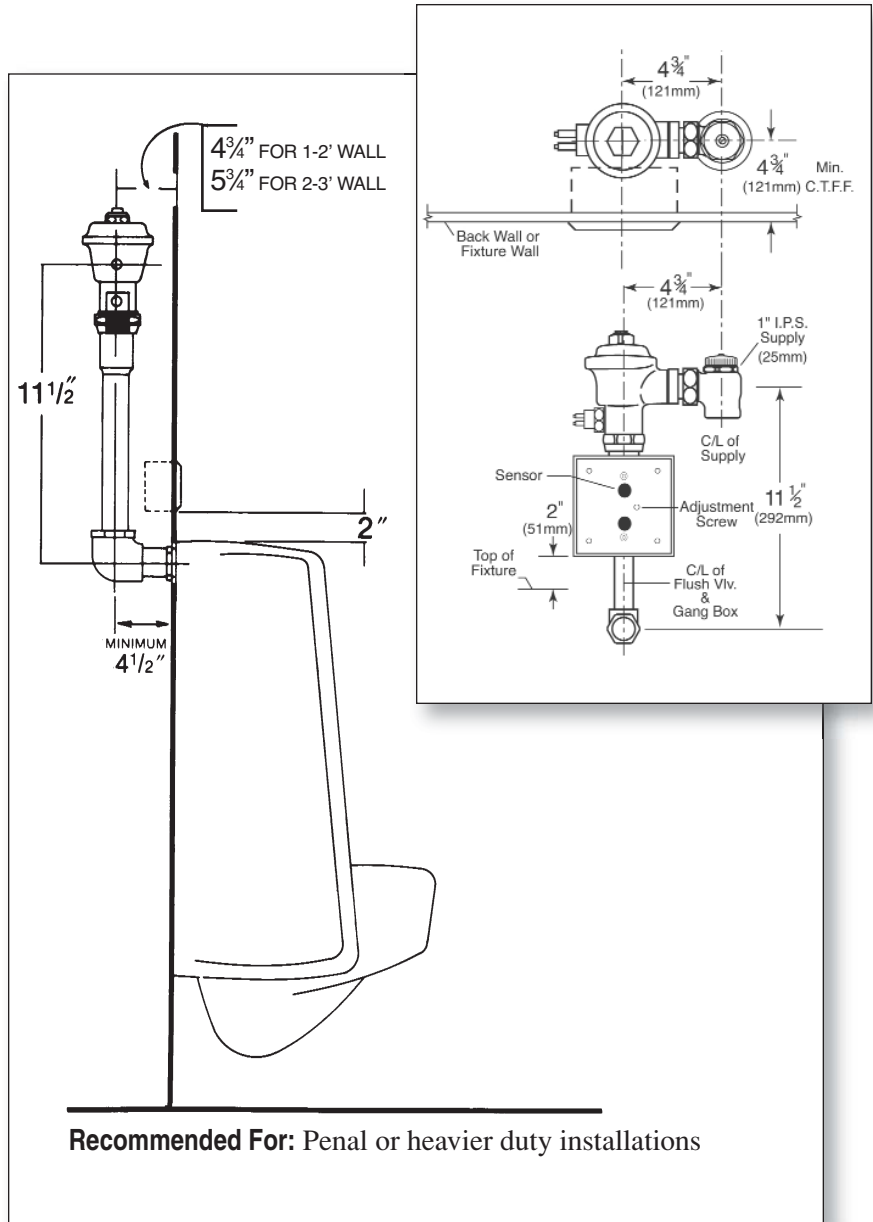
___ For: -110 Volts

Sensor: -Input 120VAC
-Output 120 VAC

Solenoid: -120VAC / 60Hz (6.2 Watts)

Remarks

*** For use with 1.5 gallon water saver urinal**



Recommended For: Penal or heavier duty installations



P.O. Box 411 · Charlottesville · VA · 22902 · USA
Phone: (434) 296-0166 · Fax (434) 977-3596
Email: info@delanyproducts.com
Web: www.delanyproducts.com
©2009