

Sensor operated polished chrome plated flush valve, diaphragm type, 1.6 gallons per flush, externally adjustable for water conservation, equipped with solenoid and sensor unit, with wall cover plate for electrical gang box with override button and tamper-proof screws, with 1" capped screwdriver angle stop with back-check, renewable main valve seat, "Turn-to-Silence" equipment, with "Kwikfit" threaded union tailpiece, vacuum breaker, wall flange, spud nut and spud flange for 1/2" top spud. *UL Listed.*

Variations

- G - Bumper on angle stop (for seat without cover)
- T6 - Heavy cast wall flange with allen head set screw
- T8 - Sweat inlet stop
- T42 - Sweat adapter kit for stop

Electrical Variations

___ For: -24 Volts (requires transformer)

Sensor: -Input 24VAC
-Output 24 VAC

Solenoid: -24VAC 50/60 Hz

Transformer: -120VAC 50/60 Hz Primary
-24VAC 50/60 Hz Secondary

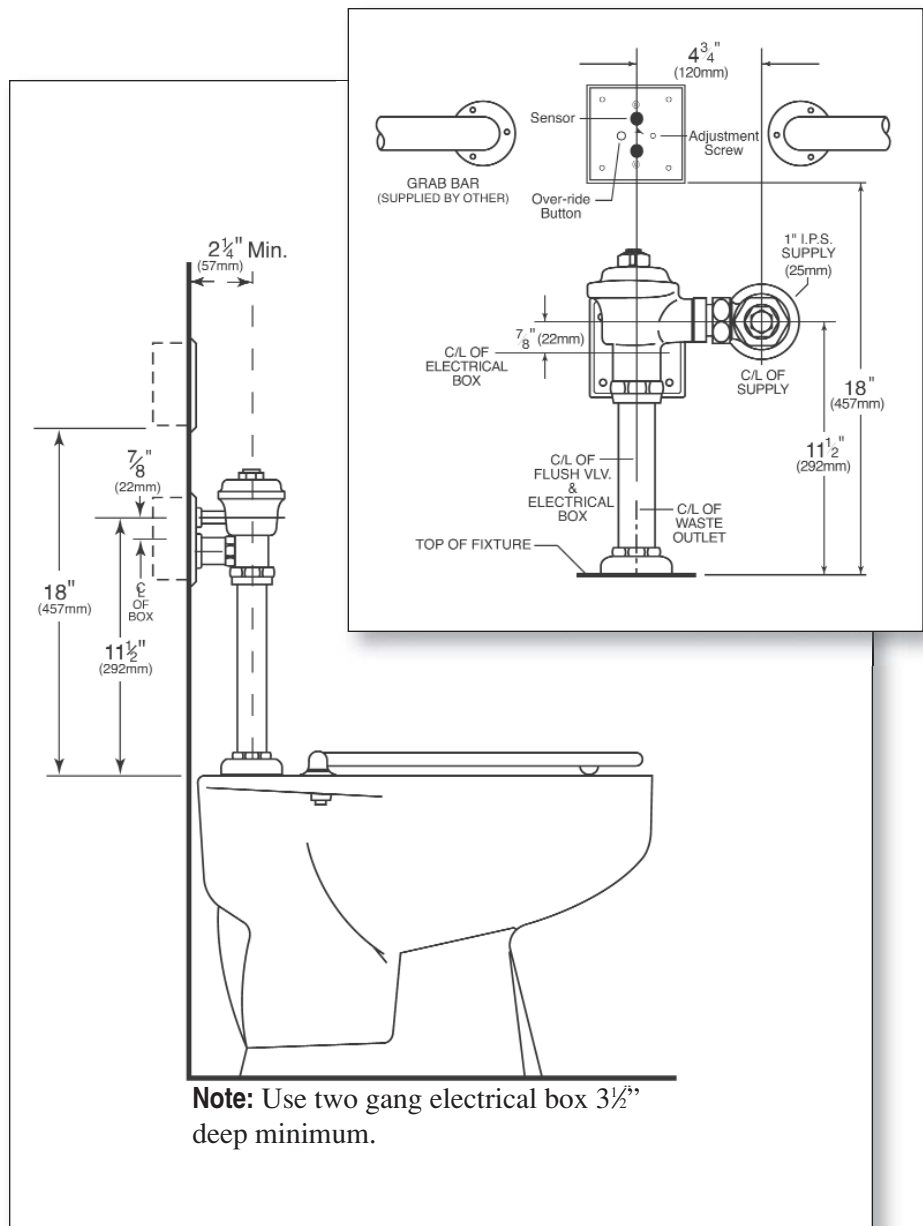
___ For: -110 Volts

Sensor: -Input 120VAC
-Output 120 VAC

Solenoid: -120VAC / 60Hz (6.2 Watts)

Remarks

* *For use with 1.6 gallon low consumption water closet*



Note: Use two gang electrical box 3 1/2" deep minimum.

