

1252-1.5

WATER SAVER URINAL FLUSH VALVE
(1.5 GALS. PER FLUSH)

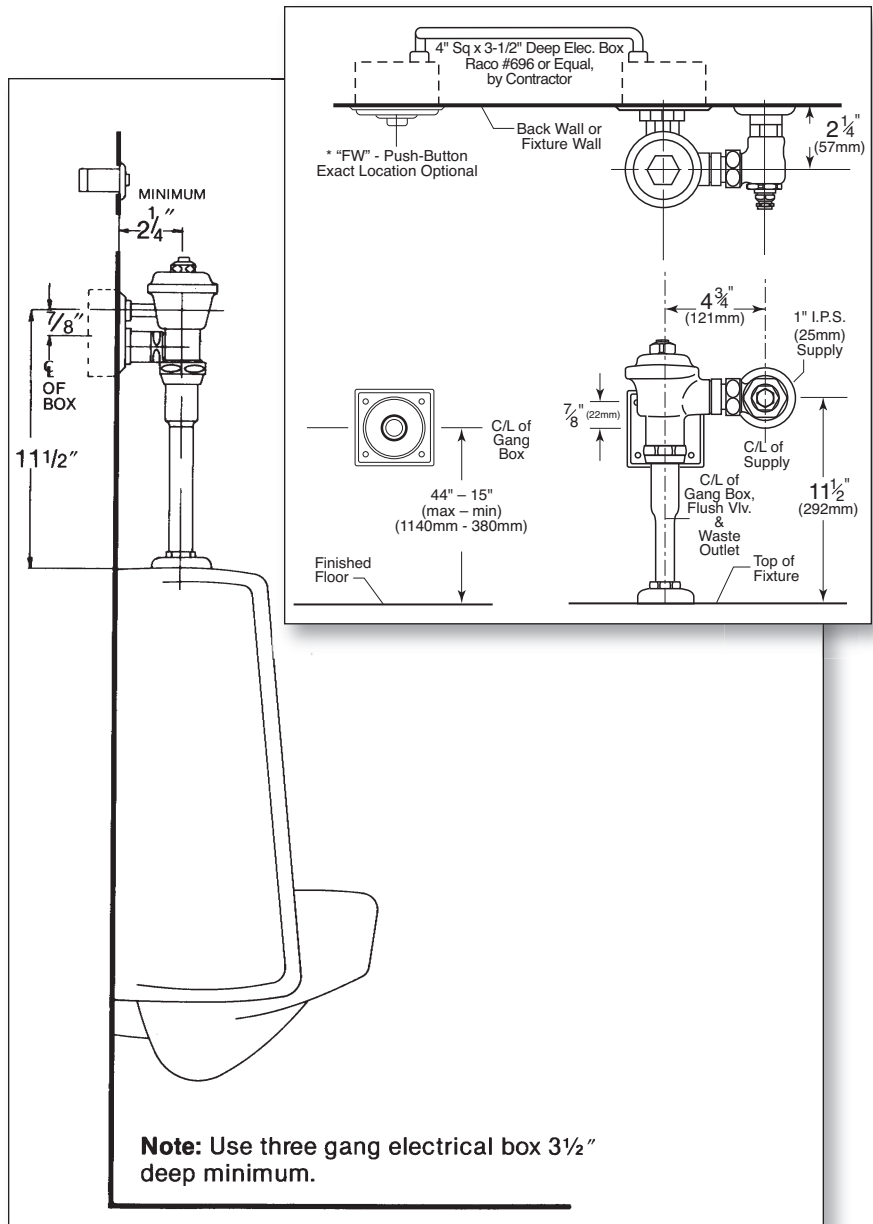
Polished chrome plated flush valve, diaphragm type, 1.5 gallons per flush, externally adjustable for water conservation, with 1" capped screw-driver angle stop with back-check, renewable main valve seat, equipped with push-button hydro-flush actuator through wall, wall plate for use with two gang gem box, wall flange, "Turn-to-Silence" equipment, with "Kwikfit" threaded union tailpiece, vacuum breaker, wall flange, spud nut and spud flange for 1 1/4" top spud. Includes 194K Sweat Adaptor Kit.

Variations

- H - Flush connection for 1 1/2" spud
- R - Wheel handle operated stop
- T36 - Solid ring wall support for flush connection
- T46 - Split ring wall support for flush connection

Remarks

* For use with 1.5 gallon water saver urinals



P.O. Box 411 · Charlottesville · VA · 22902 · USA
 Phone: (434) 296-0166 · Fax (434) 977-3596
 Email: info@delanyproducts.com
 Web: www.delanyproducts.com
 ©2009