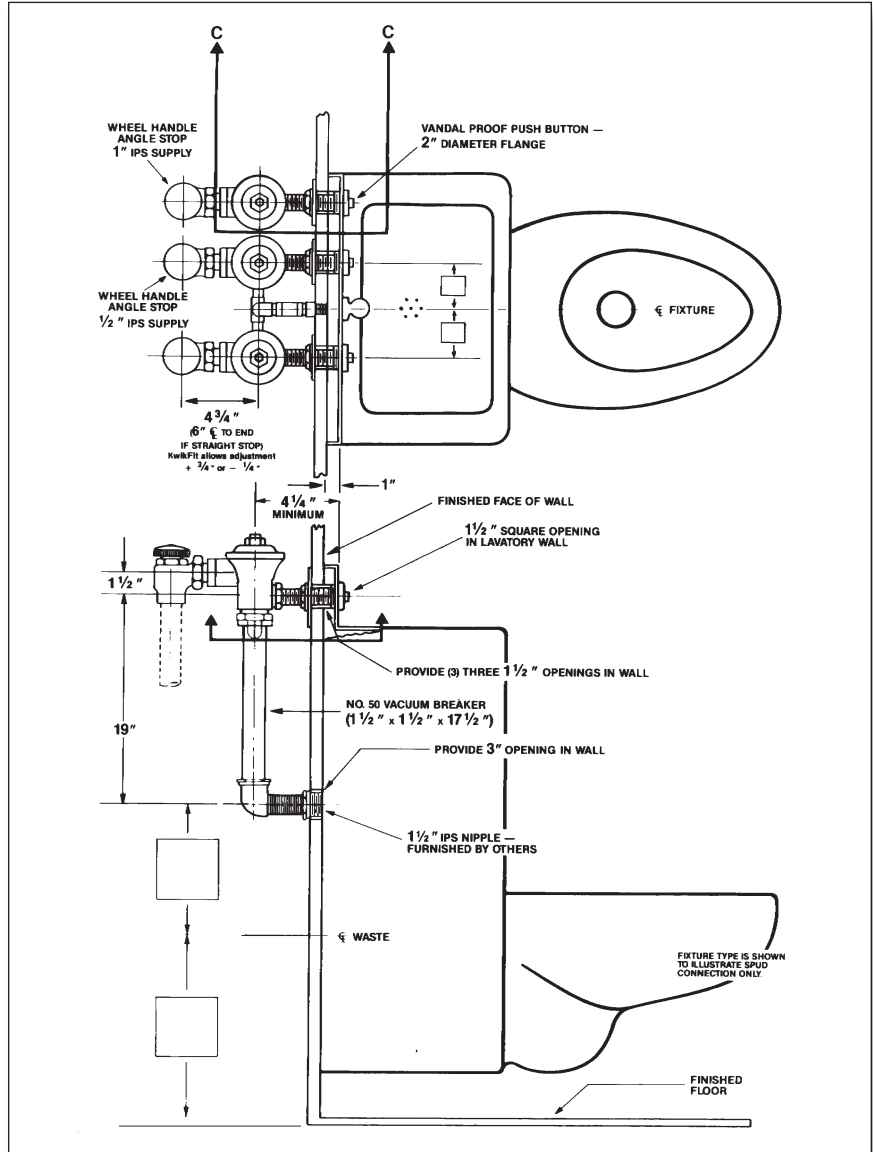


Specification: Three valve combination consisting of a water closet valve and hot and cold lavatory valve combination. All valves are concealed rough brass flush valves, diaphragm type, externally adjustable for water conservation, renewable main valve seat, metal "Rubberflex" push-button through wall and/or fixture back splash, "Turn-to-Silence" equipment, with "Kwikfit" threaded union tailpiece. Water closet valve has 1" wheel handle angle stop with back-check, vacuum breaker, elbow flush connection for 1/2" concealed back spud. Lavatory valves have 1/2" wheel handle angle stop, 1/2" I.P. flush connection to spout with 0.5 gpm flow control. All exposed parts polished chrome.

Variations

- A - Screwdriver operated stop
- C - 3" Oscillating disc
- M - 1/4" Female I.P. union outlet
- S - 3/4" Angle stop
- T7 - Nickel-silver handle, push-button, or oscillating disc, as applicable
- T8 - Sweat inlet stop
- T27 - 3/4" Straight stop
- T28 - Oscillating handle
- T37 - Non-syphon bypass
- T42 - Sweat adapter kit for stop
- Y - 1" Straight stop
-
-

Remarks



Recommended For: Penal or heavier duty installations where vandalism and abuse are common. Lavatory valve provides substantial water savings through consistent metering. Usual practice is to provide tempered water through one valve and cold water through the other. No part or valves can be removed from front of wall. Access for future repairs must be provided.



Coyne and Delany Co.
 P.O. Box 411 · Charlottesville · VA · 22902 · USA
 Phone: (434) 296-0166 · Fax (434) 977-3596