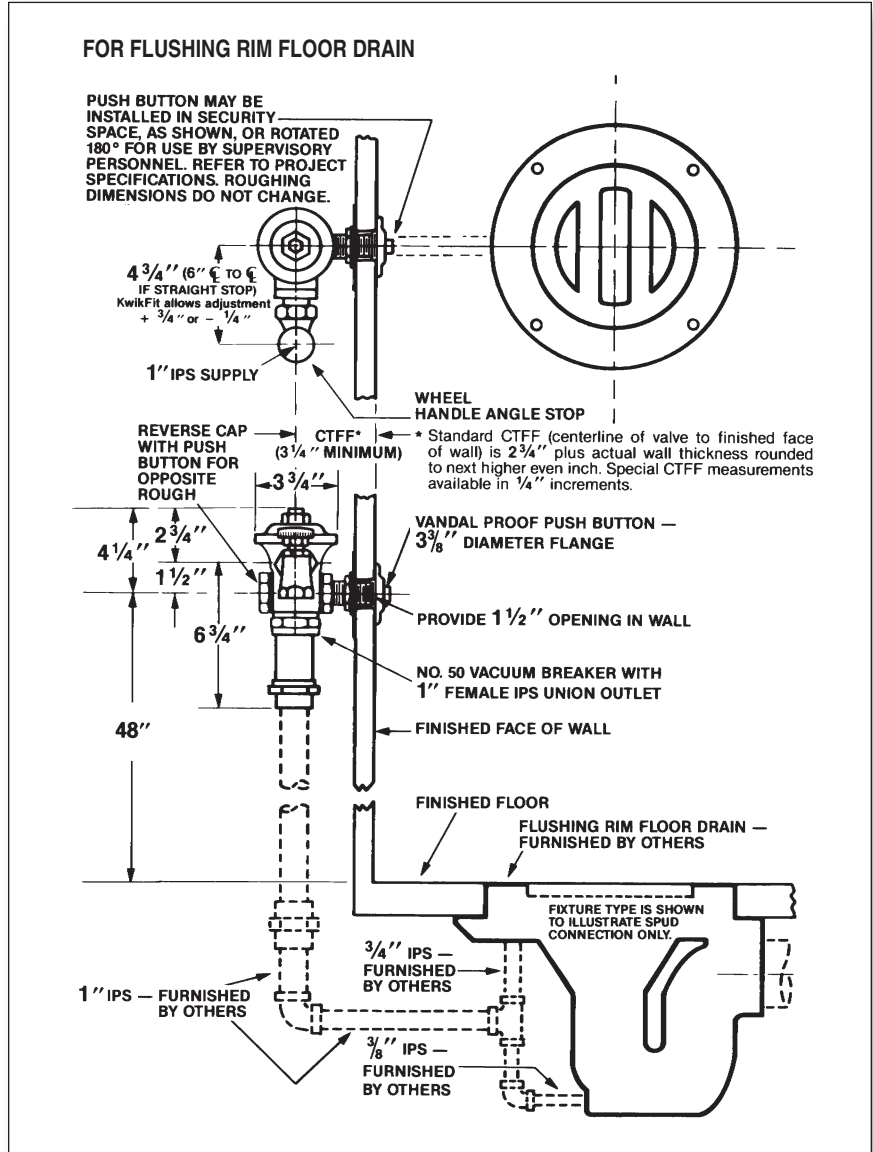


**S**pecification: Concealed rough brass flush valve, diaphragm type, externally adjustable for water conservation, with 1" wheel handle angle stop with back-check, renewable main valve seat, metal "Rubberflex" push-button through wall, wall flange, "Turn-to-Silence" equipment, with "Kwikfit" threaded union tailpiece, twin body openings for roughing left or right, vacuum breaker with 1" female I.P. union outlet. All exposed parts polished chrome

**Variations**

- A - Screwdriver operated stop
- C - 3" Oscillating disc
- M - 1/4" Female I.P. union outlet
- T7 - Nickel-silver handle, push-button, or oscillating disc, as applicable
- T8 - Sweat inlet stop
- T28 - Oscillating handle
- T32 - 3/4" Female I.P. union outlet
- T37 - Non-syphon bypass
- T42 - Sweat adapter kit for stop
- T48 - Valve for use with an access box
- Y - 1" Straight stop
- 
- 

**Remarks**



**Recommended For:** Facilities for disturbed inmates who are unwilling or unable to care for their own needs. No parts of valve can be removed from front face of wall. Push-button may be located as shown or rotated 180° for operation by attendant through wall of non-security area. In either case access to valve and vacuum breaker for future service must be provided.



P.O. Box 411 · Charlottesville · VA · 22902 · USA  
 Phone: (434) 296-0166 · Fax (434) 977-3596  
 Email: info@delanyproducts.com  
 Web: www.delanyproducts.com  
 ©2009