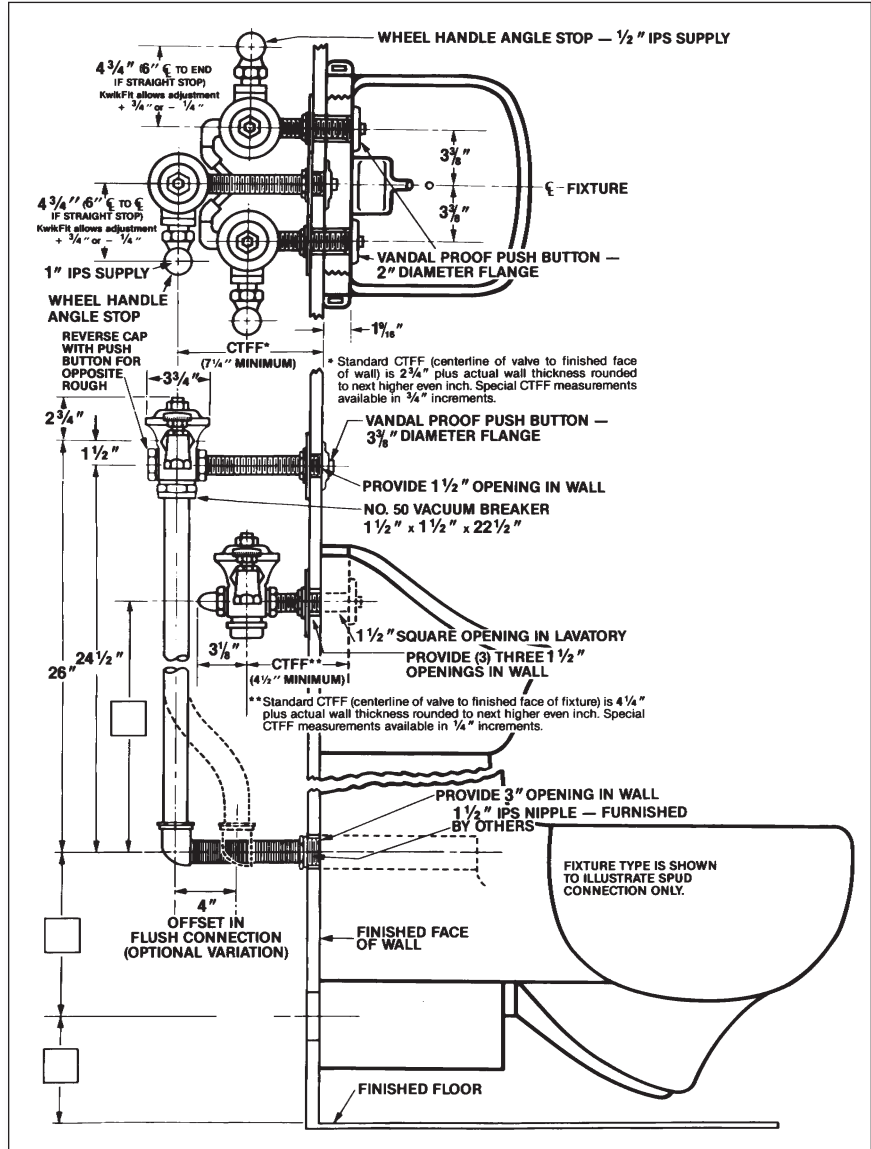


Specification: Three valve combination consisting of a water closet valve and one hot and cold lavatory valve combination. All valves are concealed rough brass flush valves, diaphragm type, externally adjustable for water conservation, renewable main valve seat, metal "Rubberflex" push-button through wall and/or fixture back splash, "Turn-to-Silence" equipment, with "Kwikfit" threaded union tailpiece. Water closet valve has 1" wheel handle angle stop with back-check, twin body openings for roughing left and right, vacuum breaker, elbow flush connection for 1/2" concealed back spud. Lavatory valves have 1/2" wheel handle angle stop, 1/2" I.P. flush connection to spout. All exposed parts polished chrome.

Variations

- A - Screwdriver operated stop
- C - 3" Oscillating disc
- S - 3/4" Angle stops
- T7 - Nickel-silver handle, push-button, or oscillating disc, as applicable
- T8 - Sweat inlet stop
- T27 - 3/4" Straight stops
- T37 - Non-syphon bypass
- T42 - Sweat adapter kit for stops
- T43 - 4" offset in No. 428A—22 1/2" flush connection
- T48 - Valve for use with an access box
- Y - 1" Straight stop
-
-

Remarks



Recommended For: Penal or heavier duty installations where vandalism and abuse are common. Lavatory valves provide substantial water savings through consistent metering. Usual practice is to provide tempered water through one valve and cold water through the other. No part of valves can be removed from front of wall. Access for future repairs must be provided.

