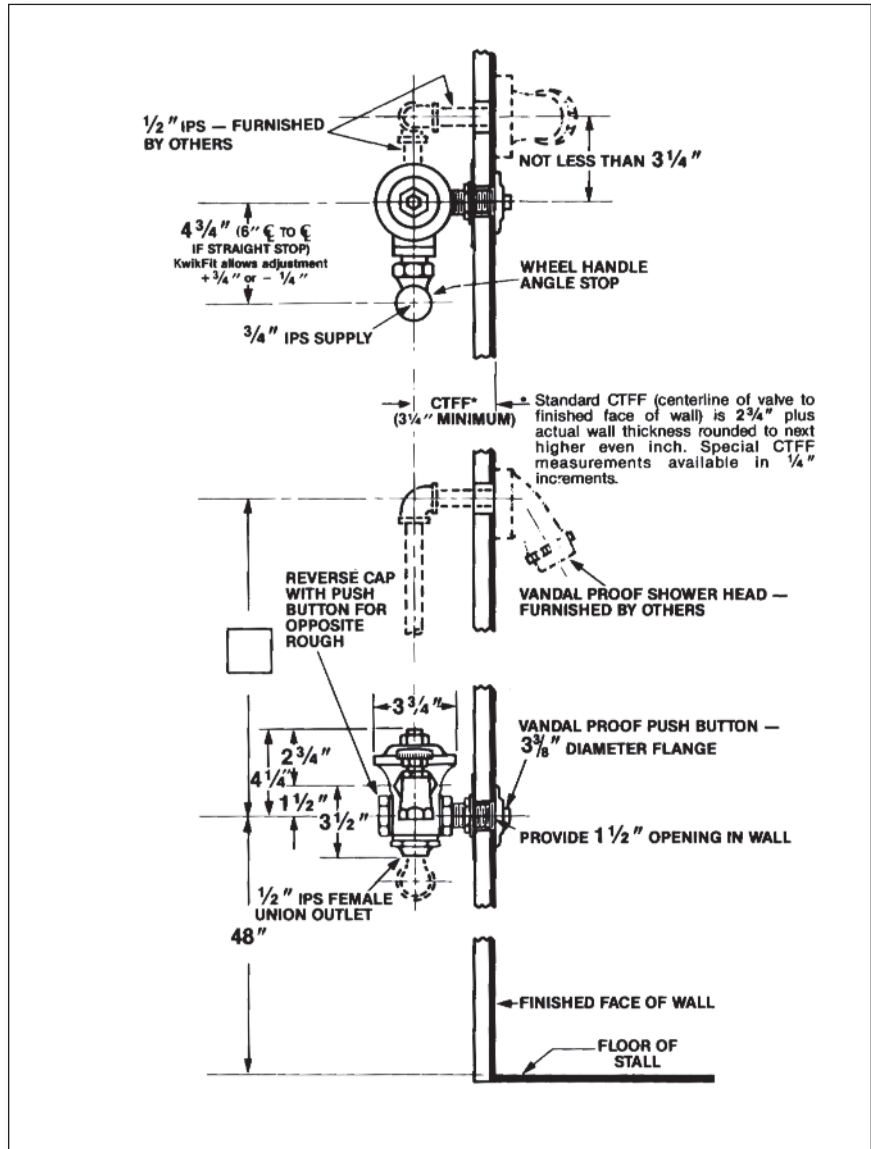


Specification: Concealed rough brass flush valve, diaphragm type, externally adjustable for water conservation, with $\frac{3}{4}$ " wheel handle angle stop with back-check, renewable main valve seat, metal "Rubberflex" push-button through wall, wall flange, "Turn-to-Silence" equipment, with "Kwikfit" threaded union tailpiece, twin body openings for roughing left or right, $\frac{1}{2}$ " female I.P. union outlet (no flush connection). All exposed parts polished chrome.

Variations

- A – Screwdriver operated stop
- C – 3" Oscillating disc
- T7 – Nickel-silver handle, push-button, or oscillating disc, as applicable
- T8 – Sweat inlet stop
- T27 – $\frac{3}{4}$ " Straight stop
- T28 – Oscillating handle
- T32 – $\frac{3}{4}$ " I.P. female union outlet
- T37 – Non-syphon bypass
- T42 – Sweat adapter kit for stop
- T48 – Valve for use with an access box
-
-

Remarks



Recommended For: Heavy duty installations where vandalism is to be expected and water wastage is commonplace. Usual practice is to supply tempered water through all flush valves in a shower room except for one or two near door which are piped for cold water rinse. Metered flush can effect tremendous savings in water consumption. Flushing cycles up to 40 seconds provide ample time for soaping up and rinsing down. No parts of valve can be removed from front of wall. Access for future repairs must be provided.



P.O. Box 411 · Charlottesville · VA · 22902 · USA
 Phone: (434) 296-0166 · Fax (434) 977-3596
 Email: info@delanyproducts.com
 Web: www.delanyproducts.com
 ©2009