

“L.C.” LOW CONSUMPTION
FLUSH VALVE (1.6 GALS. PER FLUSH)

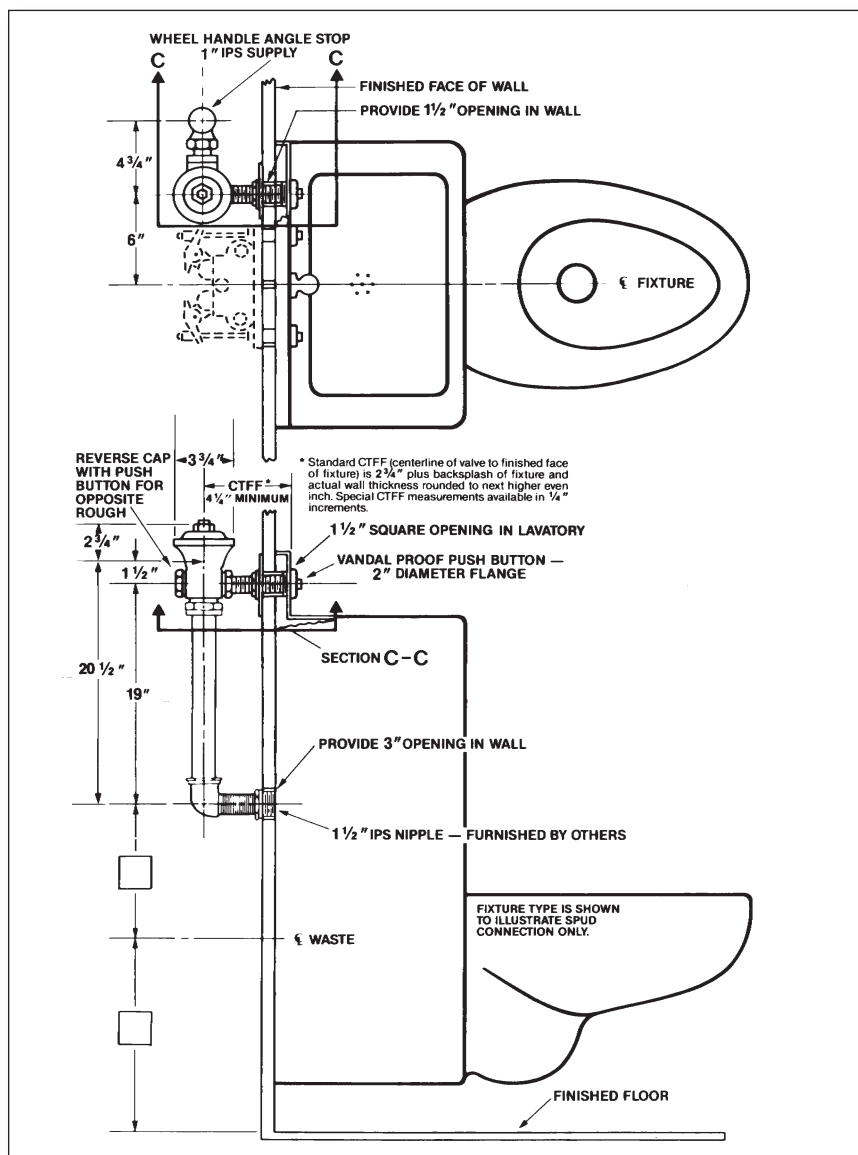
Specification: Concealed rough brass flush valve, diaphragm type, 1.6 gallons per flush, externally adjustable for water conservation, with 1" wheel handle angle stop with back-check, renewable main valve seat, metal “Rubberflex” push-button through wall and fixture back splash, back splash flange, “Turn-to-Silence” equipment, with “Kwikfit” threaded union tail-piece, twin body openings for roughing left or right, vacuum breaker, elbow flush connection for 1/2" concealed back spud. All exposed parts polished chrome.

Variations

- A – Screwdriver operated stop
- C – 3" Oscillating disc
- M – 1/4" Female I.P. union outlet
- T7 – Nickel-silver handle, push-button, or oscillating disc, as applicable
- T8 – Sweat inlet stop
- T28 – Oscillating handle
- T37 – Non-syphon bypass
- T42 – Sweat adapter kit for stop
- Y – 1" Straight stop

Remarks

* For use with 1.6 gallon low consumption water closet



Recommended For: Penal or heavier duty installations where vandalism and abuse are common. No part of valve can be removed from front face of wall. Access to rear of wall for future service of valve and vacuum breaker must be provided.



P.O. Box 411 · Charlottesville · VA · 22902 · USA
Phone: (434) 296-0166 · Fax (434) 977-3596
Email: info@delanyproducts.com
Web: www.delanyproducts.com
©2009