

ULTRA Plus - SECURITY

Description

Concealed rough brass flush valve hydraulically activated piston operated for 1.5" back entry security fixture w/ backsplash.

Flush Cycle

1.6 gpf / 6 Lpf Low Consumption

Specification

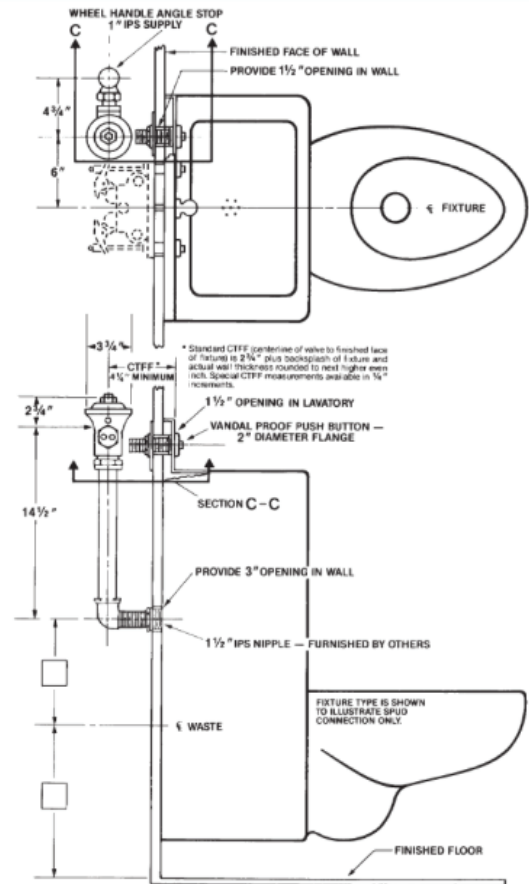
- Regulating screw for "True-in-the-Field" water conservation.
- Mashaerator self-cleaning bypass.
- ADA compliant hydro-flush actuator with pushbutton through the wall assembly.
- Renewable main valve seat.
- 1" angle stop w/ wheel handle and back-check.
- Sweat adapter kit.
- SlipFit adjustable tailpiece.
- Sweat adapter kit.
- 1.5" x 12" vacuum breaker with elbow flush connection for 1.5" back entry.
- All exposed parts chrome plated.
- All rubber parts molded of chloramine resistant rubber

Variations

- ☐ J - Screwdriver operated cotrol stop
- ☐ T48 - Valve for use with an access panel
- ☐ TS - TruStop 1" Angle Control Stop

Valve is certified to be in compliance to the applicable sections of ASSE 1037 and ANSI/ASME 112.19.2

* Wall Size Required at time of Order. Size Range from 1" to 12"
Pricing will vary based upon size. *



ASSE 1037

