

S451-1-SC-T42-TS

LOW CONSUMPTION URINAL FLUSH VALVE (1 gpf / 3.8 Lpf per Flush)

TruSABER

Description

Exposed chrome plated flush valve for 0.75" top spud
Urinals w/ TruStop control stop.

Flush Cycle

1 gpf / 3.8 Lpf Low Consumption

Specification

- Regulating screw for "True-in-the-Field" water conservation.
- Recessed hex nut for scratch resistant cover.
- Chloramine resistant self-cleaning bypass diaphragm.
- ADA compliant metal "Rubberflex" oscillating handle.
- Renewable main valve seat.
- 3/4" vandle proof TruStop ball valve designed angle control stop with TruChek.
- Sweat adapter kit.
- SlipFit adjustable tailpiece.
- 0.75" x 9" vacuum breaker flush connection.
- Wall flange, spud nut and spud flange for 3/4" top spud.
- All rubber parts molded of chloramine resistant rubber.

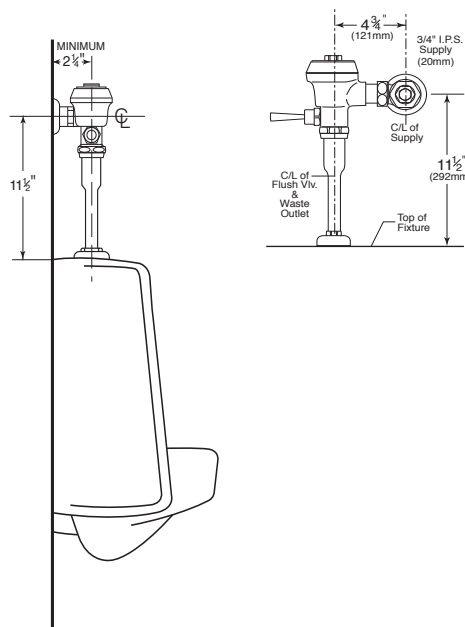
Variations

- ☐ AM - Antimicrobial Coated Handle
- ☐ SM - Side mounted battery powered sensor actuator
- ☐ T36 - Solid ring wall support for flush connection
- ☐ Logo - Customized Cover Cap w/ Logo

Valve is certified to be in compliance to the applicable sections of ASSE 1037 and ANSI/ASME 112.19.2



Patented TruStop Control Stop



ASSE 1037

