

# TS455-1.28

HIGH EFFICIENCY TOILET FLUSH VALVE  
(1.28gpf / 4.8 Lpf per Flush)

## TruSABER Bedpan Diverter

### Description

Chrome plated diaphragm operated flush valve with Delany Bedpan Diverter Arm & TruStop contrl stop for 1-1/2" top spud water closets.

### Flush Cycle

1.28 gpf / 4.8 Lpf High Efficiency

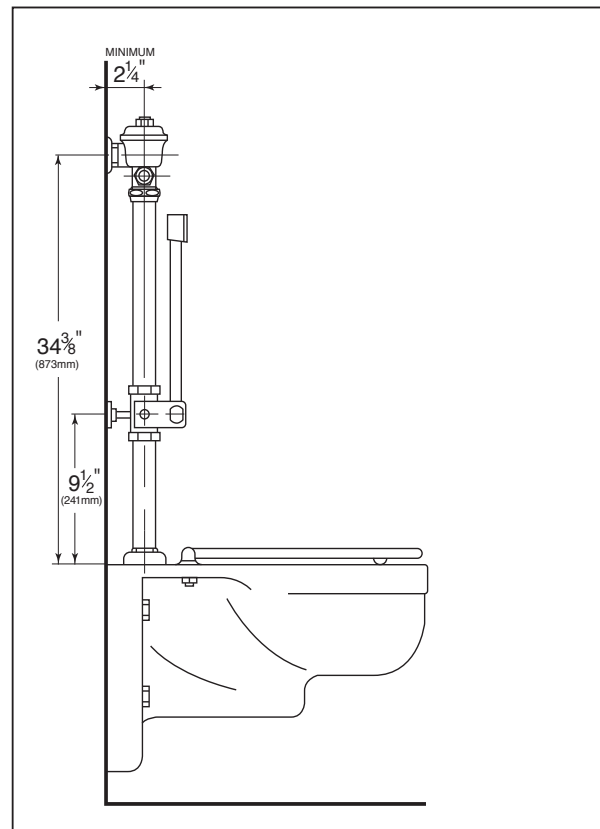
### Specification

- Scratch Proof Recessed Hex-nut designed cover
- Regulating screw for "True-in-the-Field" water conservation
- Masherator self-cleaning bypass diaphragm
- 1" vandle proof TruStop ball valve designed angle control stop with TruChek.
- Sweat adapter kit.
- Removeable main valve seat.
- ADA compliant metal "Rubberflex" oscillating handle.
- All rubber material made of chloramine resistant material
- Slip-Joint adjustable tailpiece.
- Delany Bedpan Diverter Spray Arm
- Vacuum breaker w/ 3/4-3/8" rough-in flush connection
- Wall flange, spud nut and spud flange for 1-1/2" top spud

### Variations

- ☐ AM - Antimicrobial Coated Handle
- ☐ SH - SmartHandle Dual-Flush with Antimicrobial Coating
- ☐ SM - SideArm (Side Mounted Sensor Actuator)
- ☐ T5 - Non-Hold-Open Feature
- ☐ T6 - Wall flange with allen set screw
- ☐ T36 - Solid ring wall support for flush connection
- ☐ T46 - Split ring wall support for flush connection
- ☐ VPS - Vandal Proof Control Stop with Key
- ☐ Logo - Customized Cover Cap w/ Logo

Valve is certified to be in compliance to the applicable sections of ASSE 1037 and ANSI/ASME 112.19.2



Patented TruStop Control Stop



ASSE 1037

