

ULTRA Plus HYDRO-FLUSH CONCEALED

Description

Concealed rough brass flush valve, diaphragm operated, hydraulically activated w/ short pattern vacuum breaker & no flush connection for 1.5" back entry RIM drains, wall hung or floor mounts water closets.

Flush Cycle

1.28 gpf / 4.8 Lpf High Efficiency

Specification

- Regulating screw for "True-in-the-Field" water conservation.
- Mashaerator self-cleaning bypass diaphragm.
- 1" wheel handled operated angle stop with back-check.
- Renewable main valve seat.
- ADA compliant hydro-flush actuator with push button through the wall assembly. (or replaced by fixture manufacturer)
- 1" Female I.P. union outlet for 1.5" back entry (no flush connection).
- SlipFit adjustable tailpiece.
- Sweat adapter kit.
- All rubber parts molded of chloramine resistant rubber.
- All exposed parts chrome plated.

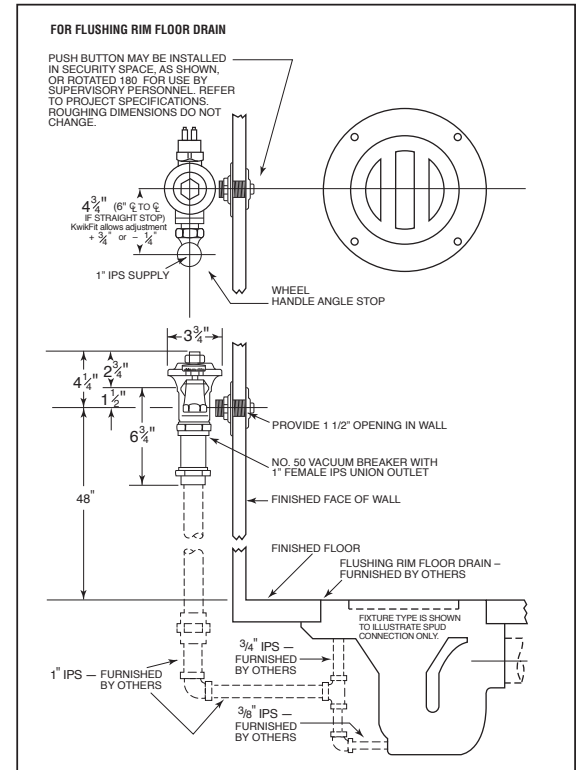
Variations

- C - 3" Oscillating Disc
- GJ - Ground Joint Connection
- J - Screwdriver operated cotrol stop
- T48 - Valve for use with an access panel
- TS - TruStop 1" Angle Control Stop

Access Panels Supplied by Others

* Wall Size Required at time of Order. Size Range from 1" to 12"
Pricing will vary based upon size. *

Valve shall be in compliance to the applicable sections of ASSE 1037



Recommended For: Facilities for disturbed inmates who are unwilling or unable to care for their own needs. No parts of valve can be removed from front face of wall. Push-button may be located as shown or rotated 180° for operation by attendant through wall of non-security area. In either case access to valve and vacuum breaker for future service must be provided.



ASSE 1037

