

ULTRA Plus Bedpan Diverter

Description

Polished chrome plated diaphragm operated flush valve with Delany Bedpan Diverter valve for 1-1/2" top spud water closets.

Flush Cycle

1.6gpf / 6.0Lpf Low Consumption

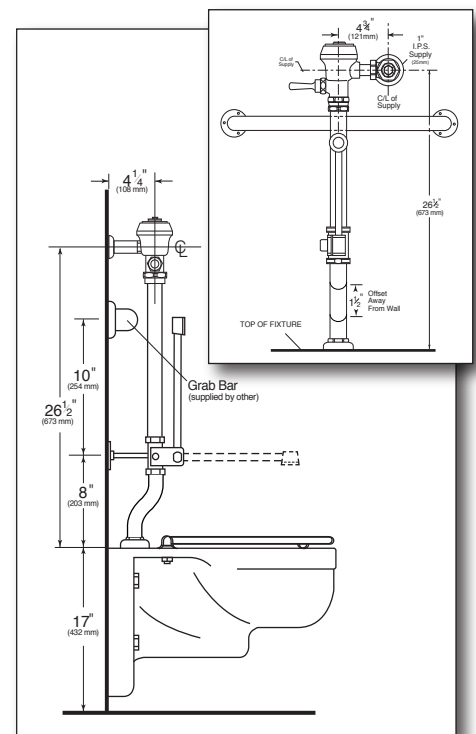
Specification

- Regulating screw for "True-in-the-Field" water conservation.
- Mashaerator self-cleaning diaphragm.
- ADA compliant "Rubberflex" oscillating handle assembly.
- Renewable main valve seat.
- Wall support (6" long).
- 1-1/2" offset flush connection for grab bar allowance.
- 1" vandle resistant capped screwdriver angle stop with back-check.
- Sweat adapter kit.
- SlipFit adjustable tailpiece.
- Vacuum breaker w/ 24" rough-in flush connection
- Wall flange, spud nut and spud flange for 1-1/2 top spud.
- All rubber parts molded of chloramine resistant rubber.

Variations

- ☐ AM - Ultra-Violet Shield antimicrobial coating for handle
- ☐ SH - SmartHandle Dual-Flush with Antimicrobial Coating
- ☐ SM - SideArm (Side Mounted Sensor Actuator)
- ☐ T5 - Non-Hold-Open Feature
- ☐ T6 - Wall flange with allen set screw
- ☐ T36 - Solid ring wall support for flush connection
- ☐ T46 - Split ring wall support for flush connection
- ☐ TS - TruStop - ball valve designed Control Stop
- ☐ VPS - Vandal Proof Control Stop with Key

Valve is certified to be in compliance to the applicable sections of ASSE 1037 and ANSI/ASME 112.19.2



ASSE 1037

