

E402-1.1

HIGH EFFICIENCY TOILET FLUSH VALVE (1.1 gpf / 4.2Lpf per Flush)

EMPIRE

Description

Exposed chrome plated, piston operated, flush valve for 1-1/2" top spud high efficiency fixtures.

Flush Cycle

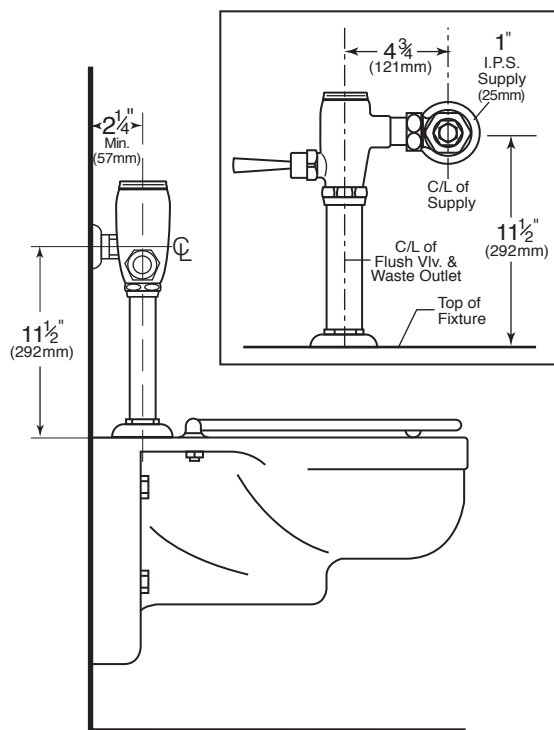
1.1gpf / 4.2Lpf High Efficiency

Specification

- Nickel plated solid brass piston cartridge.
- Masherator self-cleaning bypass.
- ADA compliant metal "Rubberflex" oscillating handle.
- 1" vandal resistant capped screwdriver angle stop with back-check.
- Sweat adapter kit.
- Slip-Joint adjustable tailpiece.
- 1-1/2" x 9" vacuum breaker flush connection.
- Wall flange, spud nut and spud flange for 1.5" top spud.
- All rubber parts molded of chloramine resistant rubber

Variations

- ☐ AM - Antimicrobial Coated Handle
- ☐ G - Bumper on angle stop (for seat without cover)
- ☐ SM - SideArm (Side Mounted Sensor Actuator)
- ☐ T6 - Wall flange with allen set screw
- ☐ T36 - Solid ring wall support for flush connection
- ☐ T46 - Split ring wall support for flush connection
- ☐ TS - TruStop - Ball valve designed Control Stop
- ☐ VPS - Vandal Proof Control Stop with Key



ASSE 1037

