

S402-1.6

LOW CONSUMPTION TOILET FLUSH VALVE (1.6gpf / 6.0Lpf per Flush)

SABER

Description

Chrome plated diaphragm operated flush valve, for floor mounted or wall hung 1-1/2" top spud bowls.

Flush Cycle

1.6gpf / 6.0Lpf Low Consumption

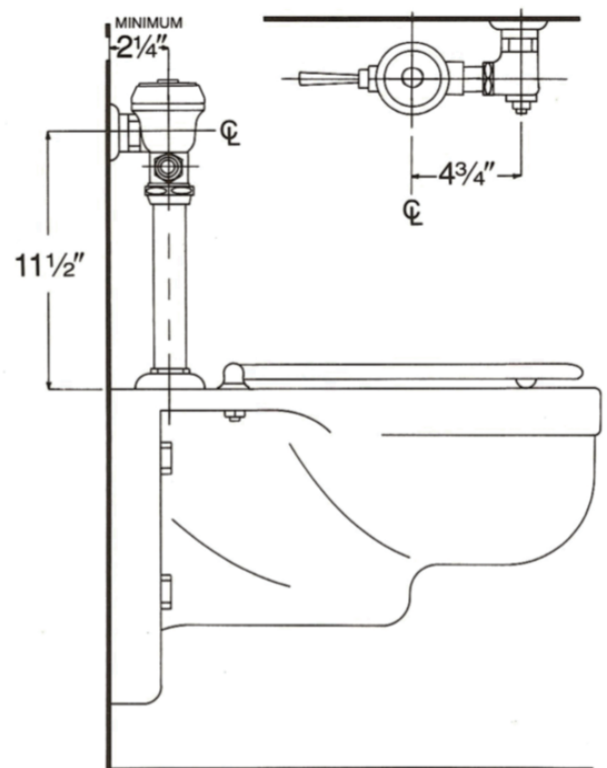
Specifications

- Scratch proof recessed hex-nut designed cover
- Regulating screw for "True-in-the-Field" water conservation
- Mashaerator self-cleaning bypass diaphragm
- With 1" vandle resistant capped screwdriver angle stop with back-check.
- Sweat adapter kit.
- Removeable main valve seat.
- ADA compliant metal "Rubberflex" oscillating handle.
- All rubber material made of chloramine resistant material
- Slip-Joint adjustable tailpiece.
- Vacuum breaker.
- Wall flange, spud nut and spud flange for 1-1/2" top spud.

Variations

- ☐ AM - Antimicrobial Coated Handle
- ☐ G - Bumper on Control Stop for Seat
- ☐ SH - SmartHandle Dual-Flush with Antimicrobial Coating
- ☐ SM - SideArm (Side Mounted Sensor Actuator)
- ☐ T5 - Non-Hold-Open Feature
- ☐ T6 - Wall flange with allen set screw
- ☐ T36 - Solid ring wall support for flush connection
- ☐ T46 - Split ring wall support for flush connection
- ☐ VPS - Vandal Proof Control Stop with Key
- ☐ Logo - Customized Cover Cap w/ Logo

Valve is certified to be in compliance to the applicable sections of ASSE 1037 and ANSI/ASME 112.19.2



ASSE 1037

P.O. Box 411 • Charlottesville • VA • 22902 • USA Phone: (434) 296-0166 • Fax (434) 977-3596
Email: info@delanyproducts.com Web: www.delanyproducts.com ©2015 v3