

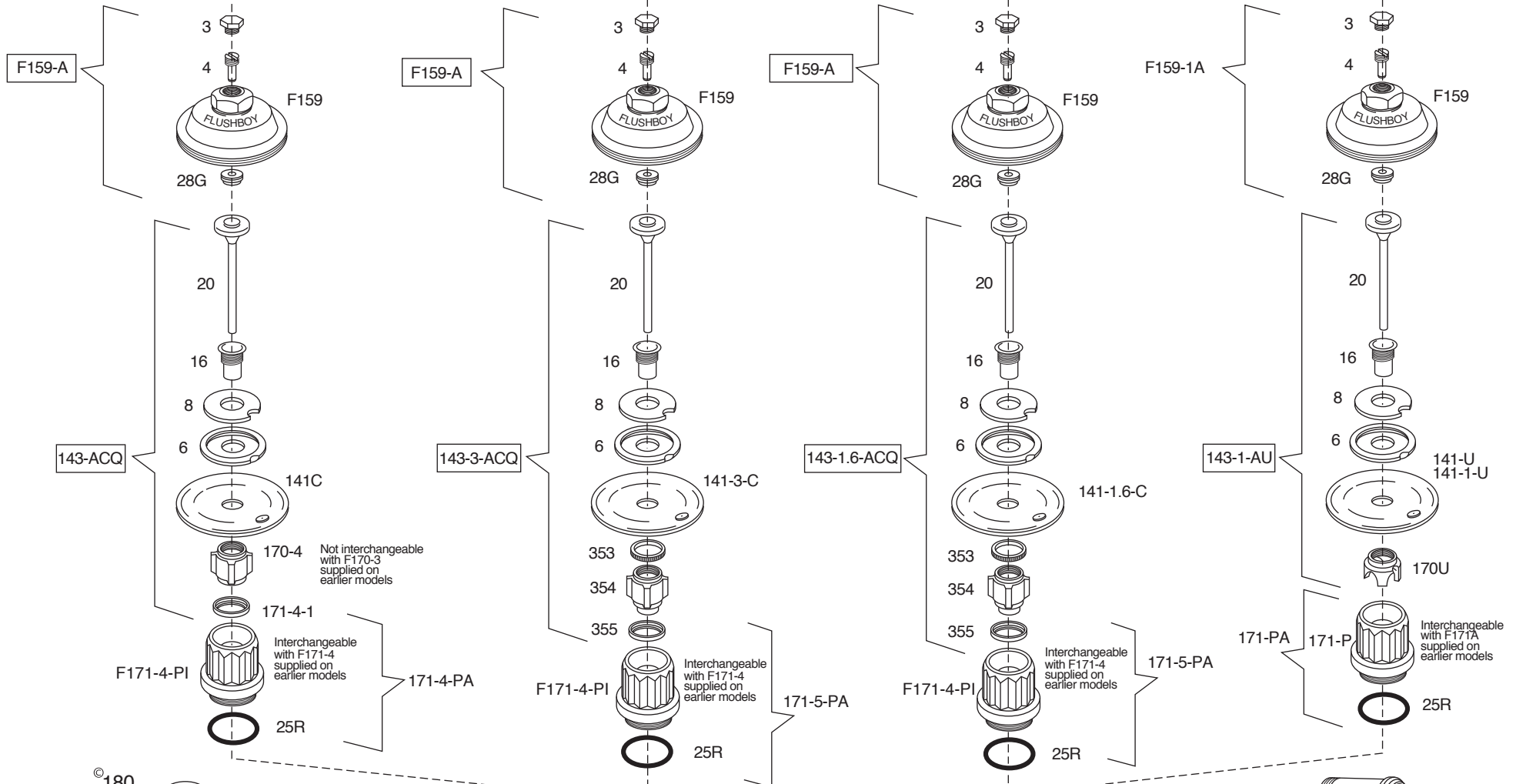
# Flushboy Parts Breakdown

**F402 / F452**  
(With "Turn-to-silence" on cover)  
(Valves with 1" supply)

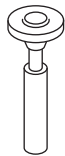
**F402-3 / F452-3**  
(With "water saver" / 3.5gpf on cover)  
(Valves with 1" supply)

**F402-1.6 / F452-1.5**  
(With "1.6gpf" on cover)  
(Valves with 1" supply)

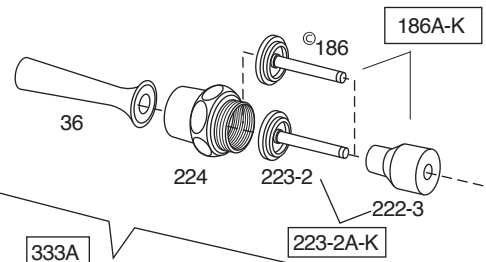
**F451 / F451-1.0**  
(With "1.0gpf" on cover)  
(Valves with 3/4" supply)



©180



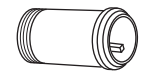
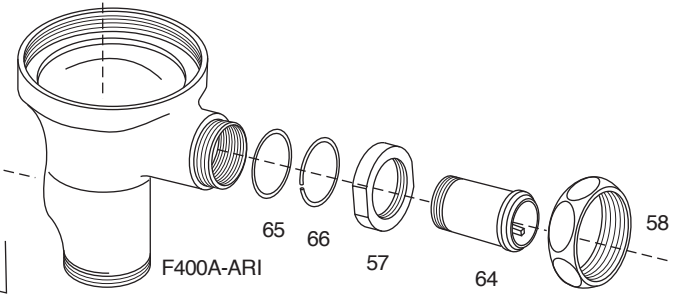
180 part and 186 part supplied in valves with non hold open feature must be used together. For complete diaphragm operating assembly with non hold open feature, order as applicable:  
141ACQT5  
141-3ACQT5  
141-1.6ACQT5  
141-1AUT5  
For complete handle assembly for non hold open feature, order 333AT5



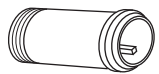
333A

Also available with pushbutton, disc, or foot pedal. Select from table next page.

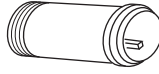
■ Allows Model 3 handle to replace Model 2 handle. Order with Rubberflex assemblies or F222-3 Part.



64-1 / TBX0895  
5-1/2" - 6-1/2"



64-2 / TBX0896  
6-1/2" - 7-1/2"



64-3 / TBX0897  
7-1/2" - 8-1/2"