

S402-1.28-SC-T42-SM

HIGH EFFICIENCY TOILET FLUSH VALVE
(1.28gpf / 4.8Lpf per Flush)

SABER

Description

Exposed chrome plated flush valve for 1-1/2" top spud floor mounted or wall hung water closets with side mounted sensor activated actuator ("SideArm")

Flush Cycle

1.28gpf / 4.8Lpf High Efficiency

Specification

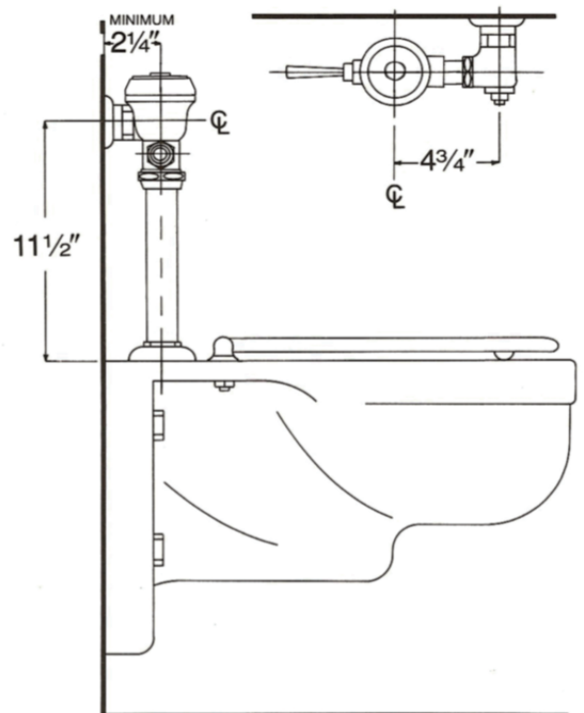
- SideArm (side mounted sensor actuator) with True Mechanical Override button
- Regulating screw for "True-in-the-Field" water conservation.
- Mashaerator self-cleaning bypass diaphragm
- 1" vandle resistant capped screwdriver angle stop with back-check
- Sweat adapter kit
- Renewable main valve seat
- ADA compliant metal "Rubberflex" oscillating handle.
- Slip-Joint adjustable tailpiece
- 1.5" x 9" vacuum breaker flush connection
- Wall flange, spud nut and spud flange for 1.5" top spud
- All rubber parts molded of chloramine resistant rubber

Variations

- ☐ AM - Antimicrobial Coated Handle
- ☐ G - Bumper on Control Stop for Seat
- ☐ SH - SmartHandle Dual-Flush with Antimicrobial Coating
- ☐ T5 - Non-Hold-Open Feature
- ☐ T6 - Wall flange with allen set screw
- ☐ T36 - Solid ring wall support for flush connection
- ☐ T46 - Split ring wall support for flush connection
- ☐ VPS - Vandal Proof Control Stop with Key
- ☐ Logo - Customized Cover Cap w/ Logo

Valve is certified to be in compliance to the applicable sections of ASSE 1037 and ANSI/ASME 112.19.2
WaterSense Listed and compliant when paired with a WaterSense compliant fixture.

* Recommended for both hard water and highly chlorinated water conditions.



ASSE 1037