

TruSABER Bedpan Diverter

Description

Polished chrome plated diaphragm operated flush valve with Delany Bedpan Diverter valve & TruStop control stop for 1-1/2" top spud water closets.

Flush Cycle

1.6gpf / 6.0Lpf Low Consumption

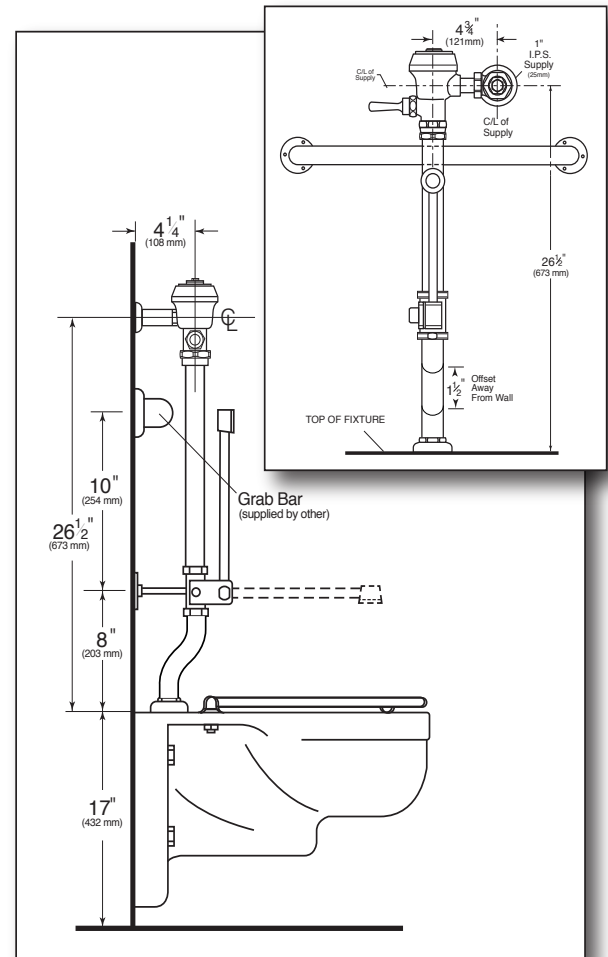
Specification

- Scratch Proof Recessed Hex-nut designed cover
- Regulating screw for "True-in-the-Field" water conservation
- Mashaerator self-cleaning bypass diaphragm
- 1" vandle proof TruStop ball valve designed angle control stop with TruChek.
- Removeable main valve seat.
- ADA compliant metal "Rubberflex" oscillating handle.
- All rubber material made of chloramine resistant material
- Slip-Joint adjustable tailpiece.
- Sweat adapter kit.
- Delany Bedpan Diverter Spray Arm
- Vacuum breaker w/ 26-1/2" flush connection & 1-1/2" offset
- Wall flange, spud nut and spud flange for 1-1/2" top spud

Variations

- ☐ AM - Antimicrobial Coated Handle
- ☐ SH - SmartHandle Dual-Flush with Antimicrobial Coating
- ☐ SM - SideArm (Side Mounted Sensor Actuator)
- ☐ T5 - Non-Hold-Open Feature
- ☐ T36 - Solid ring wall support for flush connection
- ☐ Logo - Customized Cover Cap w/ Logo

Valve is certified to be in compliance to the applicable sections of ASSE 1037 and ANSI/ASME 112.19.2



Patented TruStop Control Stop



ASSE 1037

